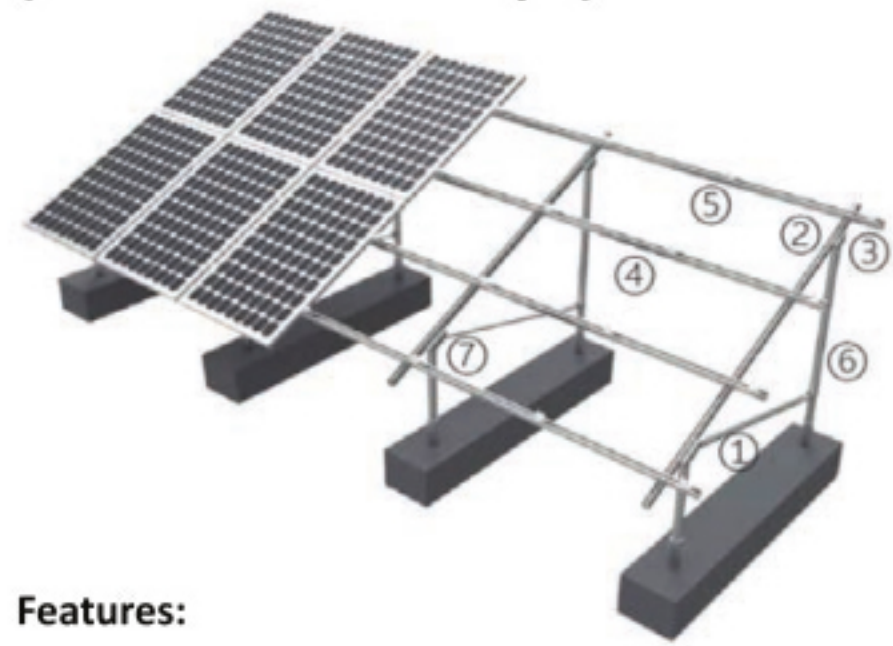


## Concrete Foundation Ground Mount (Pre-buried Steel Pipe)



### Features:

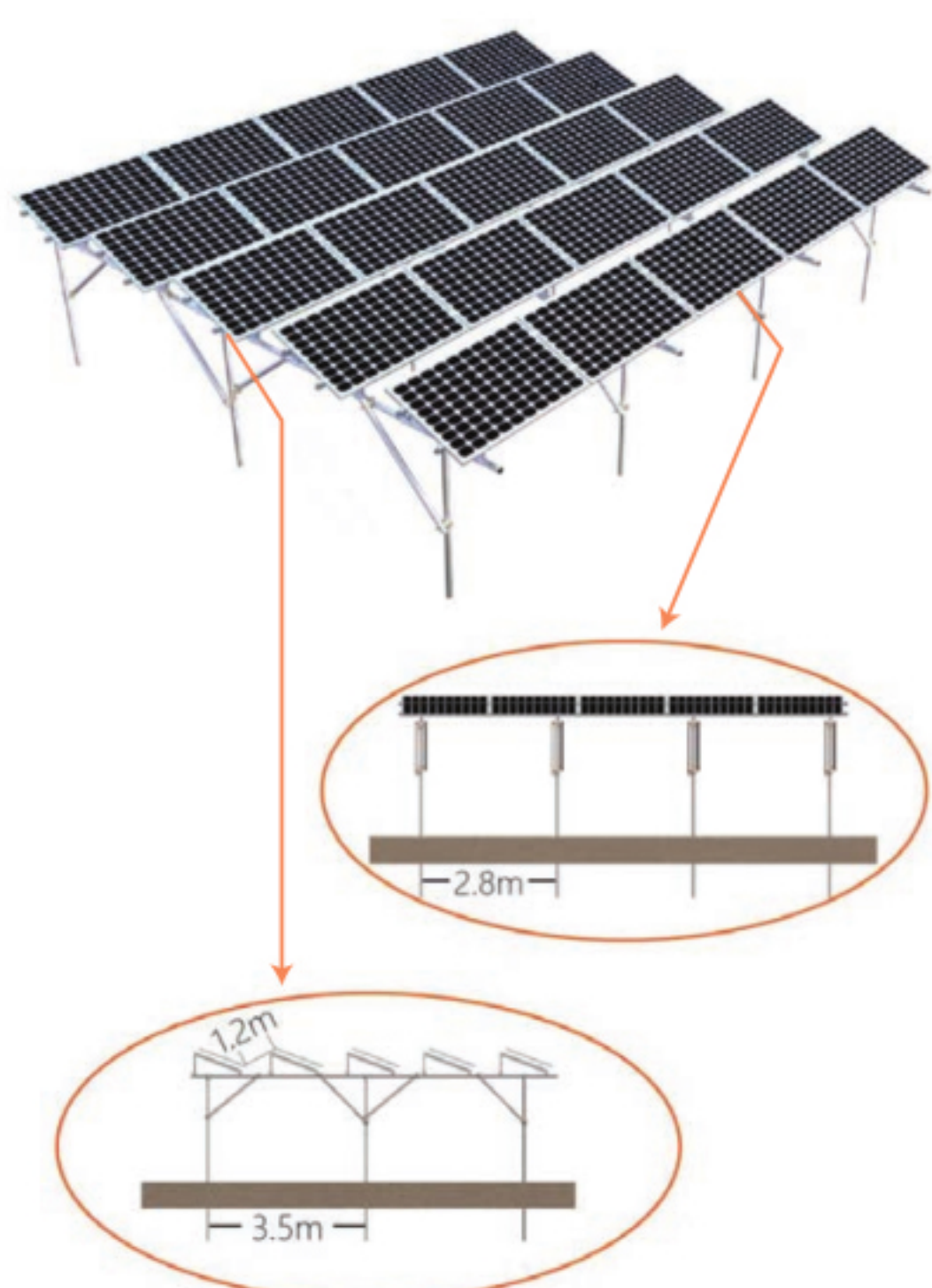
- With steel pipe pre-buried, fast installation
- Sturdy, Stable, Durable
- Cast-in concrete for high accuracy, perpendicularity and evenness of module arrays
- Suitable for regions with low-cost concretes
- Applicable for different geological conditions, such as soft grass lands, or rigid and story soils, gobi, deserts, gravel soils
- Suitable for regions with high wind and heavy snow.
- Array: Landscape or Portrait

### Specifications:

- Applicable for: large-scale ground solar park
- Foundation: concrete base
- Structure material: hot-dip galvanized steel, aluminium alloy and stainless steel
- Snow load: 1.0 KN/m<sup>2</sup>
- Wind load: 38m/s
- Tilt angle: fixed, customized available
- Solar module type: framed module, or frameless thin film module
- Galvanizing thickness: 65μm or customized



## Farmland Mounting System



### Specifications:

- Tilt angle: 0°- 30°
- Wind load: 42m/s
- Snow load: 1.4 KN/m<sup>2</sup>
- Materials: 6005-T5 anodized aluminum Q235 hot-dip galvanized carbon steel SUS304

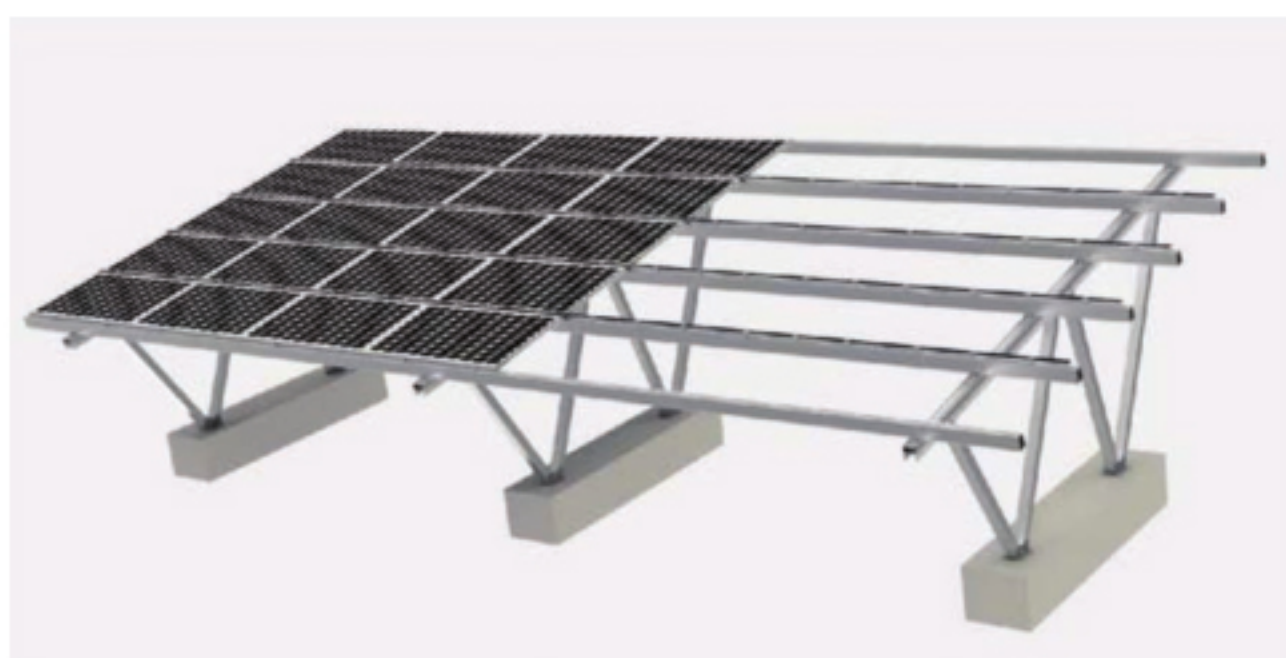
### Features:

- High strength & corrosion resistance
- Heavy snow and typhoon resistance
- Easy and fast installation
- Install over the farmland to economize land utilization
- Recyclable
- Customized design available



# Mounting Kit

## Carport Mounting System I

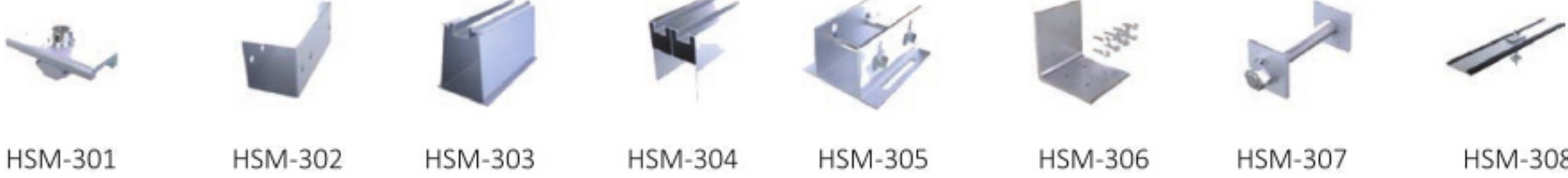
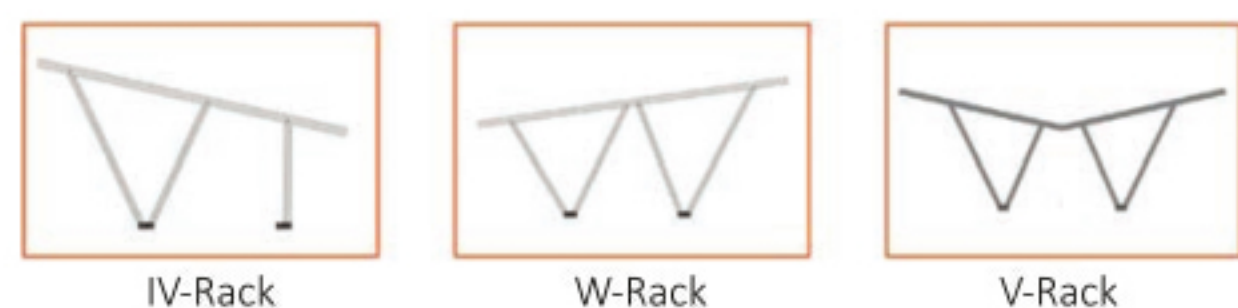


### Specifications:

- Tilt angle: 0°- 50°
- Wind load: 60m/s
- Snow load: 3 KN/m<sup>2</sup>
- Customized color available

### Features:

- Made of 6005-T5 aluminum and 304 stainless steel, high strength & corrosion resistance
- Heavy snow and typhoon resistance
- Easy and fast installation
- Economize the land utilization
- Recyclable
- Customized design available



## Carport Mounting System II



### Specifications:

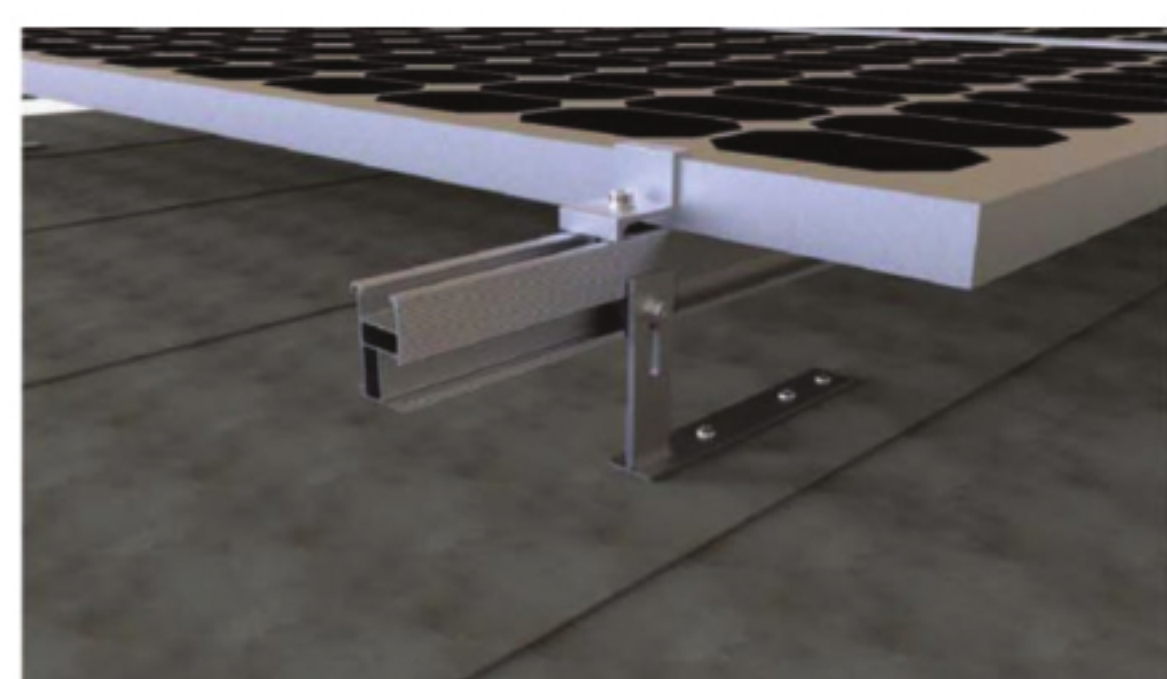
- Tilt angle: 0°- 15°
- Wind load: 42m/s
- Snow load: 1.4 KN/m<sup>2</sup>
- Customized color available

### Features:

- Made of 6005-T5 aluminum and 304 stainless steel, high strength & corrosion resistance
- Cheaper than Carport I
- Easy and fast installation
- Economize the land utilization
- Recyclable
- Customized design available



## Flat Tile Roof Mount



### Features:

- Accommodate different types of flat tile roofs
- Made of 6005-T5 aluminum and 304 stainless steel for heavy snow and typhoon resistance
- Pre-assembled parts for easy and fast installation
- Recyclable
- Custom-made available

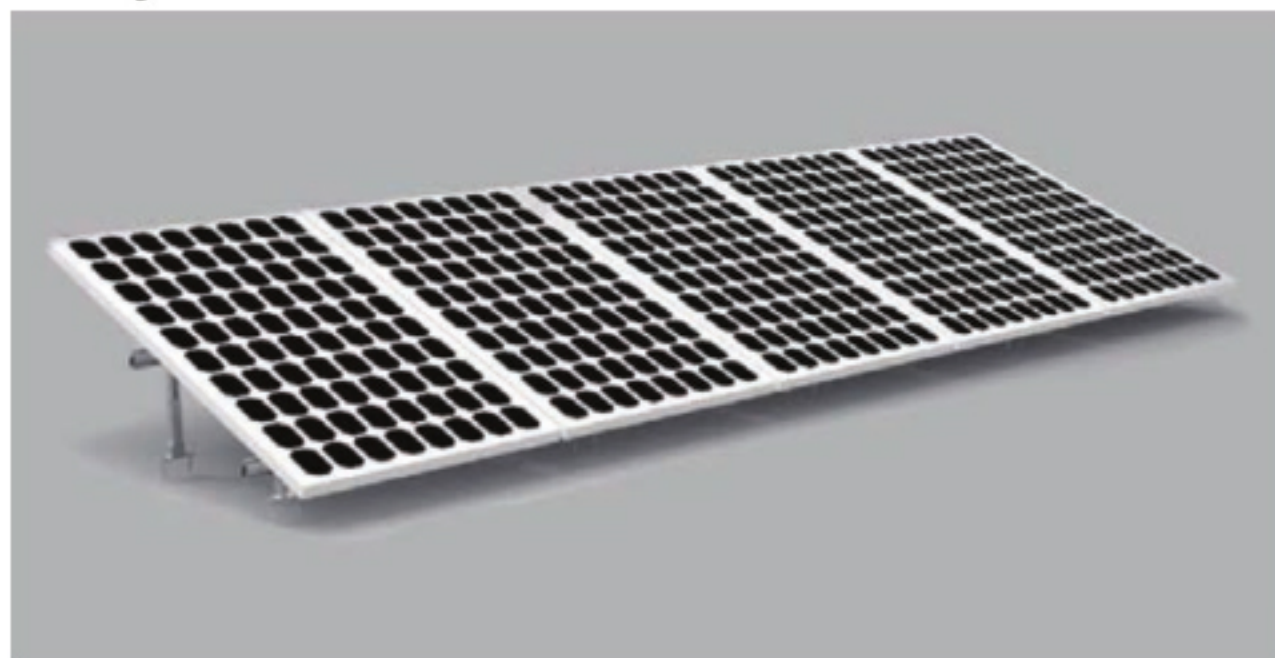
### Components:

	Quality
A. 304 Stainless steel hook	1
B. 6.3*80mm lag screw & EPDM washer	3
C. M8*25mm SUS304 bolt & rail nut & SUS washer	1

## Flat Tile Hook Option

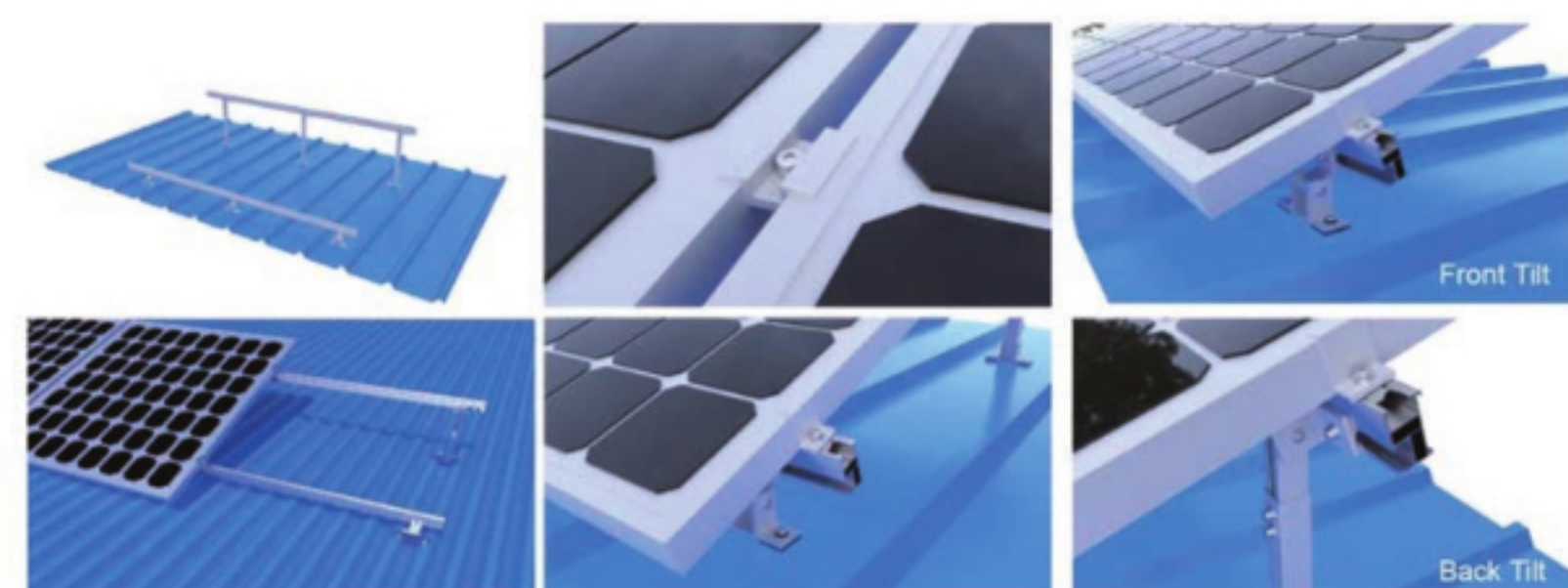


## Adjustable Tilt Roof Mount



### Features:

- Easy and fast installation
- Adjustable tilt angle per different requests
- Saving on-site installation time and labor costs
- Recyclable
- Customized design available



Front Tilt Back Tilt