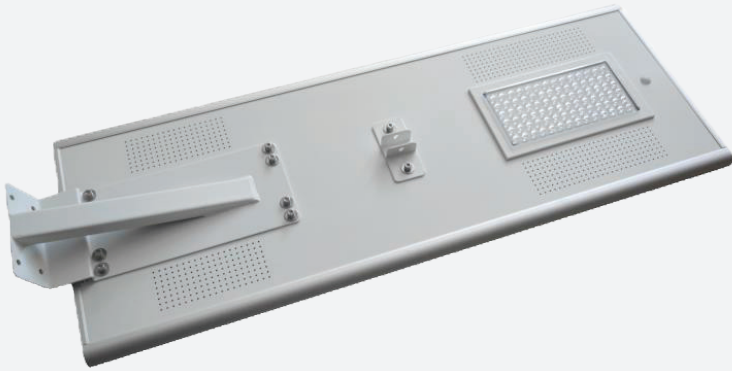


## SOLAR LED STREET LIGHT 30W TO 100W

### HSL-80W



#### Brief Description

Type: Street lights, Garden lights

Mountion Height: 8-10 meters

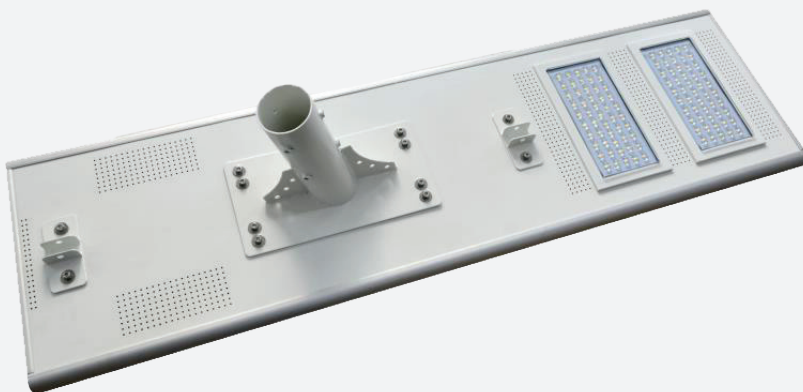
Applications: gardens, streets, roads, community, parks, parking etc..

#### FEATURES

- \* LED: 8200 Lumens, 2700K-7000K
- \* Lithium battery: 60AH 12V
- \* Solar Panel: Efficiency USA Sunpower Solar Panel 18V 100W
- \* Install height: 8-10 meters
- \* Waterproof: IP 65
- \* Solar charging time: 6-7 hours by bright sunlight
- \* Lighting time: 7 days, 12hrs per night
- \* Material: Aluminum alloy + PC lens
- \* Size: 1210\*460\*45mm, 25kg
- \* Work Temperature: -30° to 60°
- \* Warranty: 3 years

All in One Solar Street Light 80W with bracket and sensor/ time/ light control

### HSL-100W



#### Brief Description

Type: Street lights, Garden lights

Mountion Height: 9-11 meters

Applications: gardens, streets, roads, community, parks, parking etc..

#### FEATURES

- \* LED: 11000 Lumens, 2700K-7000K
- \* Lithium battery: 80Ah 12V
- \* Solar Panel: USA Sunpower 18Ah 130W
- \* Install height: 9-11 meters
- \* Waterproof: IP 65
- \* Solar charging time: 6-7 hours by bright sunlight
- \* Lighting time: 7 days, 12hrs per night
- \* Material: Aluminum alloy + PC lens
- \* Size: 1570\*460\*45mm, 33kg
- \* Work Temperature: -30° to 60°
- \* Warranty: 3 years

All in One Solar Street Light 100W with bracket and APP/ sensor/ time/ light control